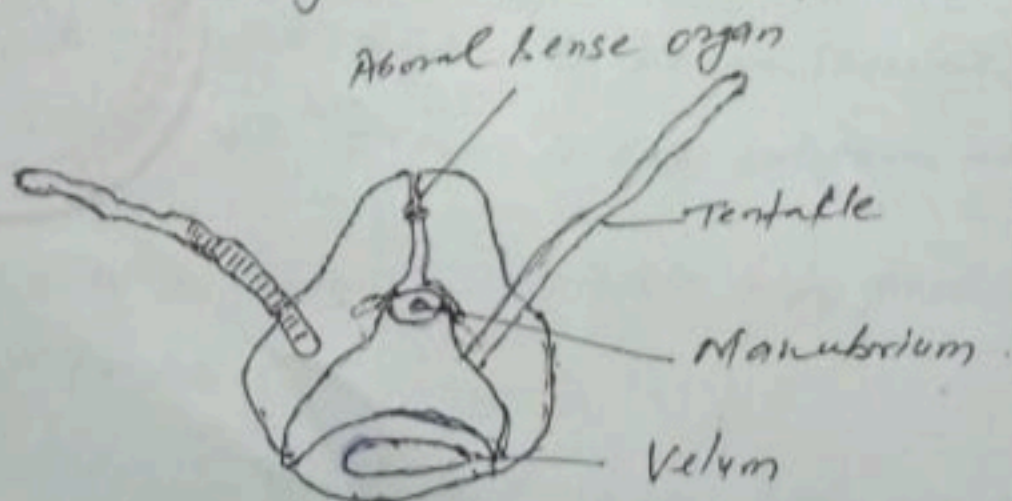


Exercises  
20.01.2022  
BT Zoology (H), Qn. A, Part

special features of ctenophora (comb jellies)

1. Oppositely placed tentacles in sheaths.
2. Presence of aboral sense organ.
3. Absence of Nematocytes and presence of Lasso cells.
4. Triploblastic because of the presence of well-developed ectoderm.
5. Absence of epitheliomuscular cells.
6. Eight locomotor meridional ciliated bands or comb rows.
7. Digestive system with aboral and oral pores.
8. Development involves gastrula-like stage formed by epiboly or overgrowth.
9. Determinate type of development.

Some zoologists (especially Lany) have advocated the view that ctenophora lead directly to the polyclad flatworms (Turbellaria)



Hydrocena

Centromeres will persist and the one without centromere will be lost during cell division

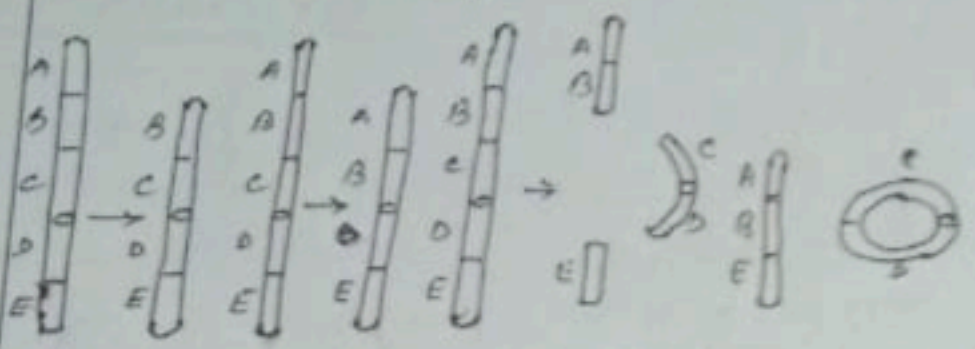


Fig: 1. Deletion 2. interstitial 3. 4. deletion ring

① Duplication - when a part of the chromosome is repeated in one of the members of the homologous pair.

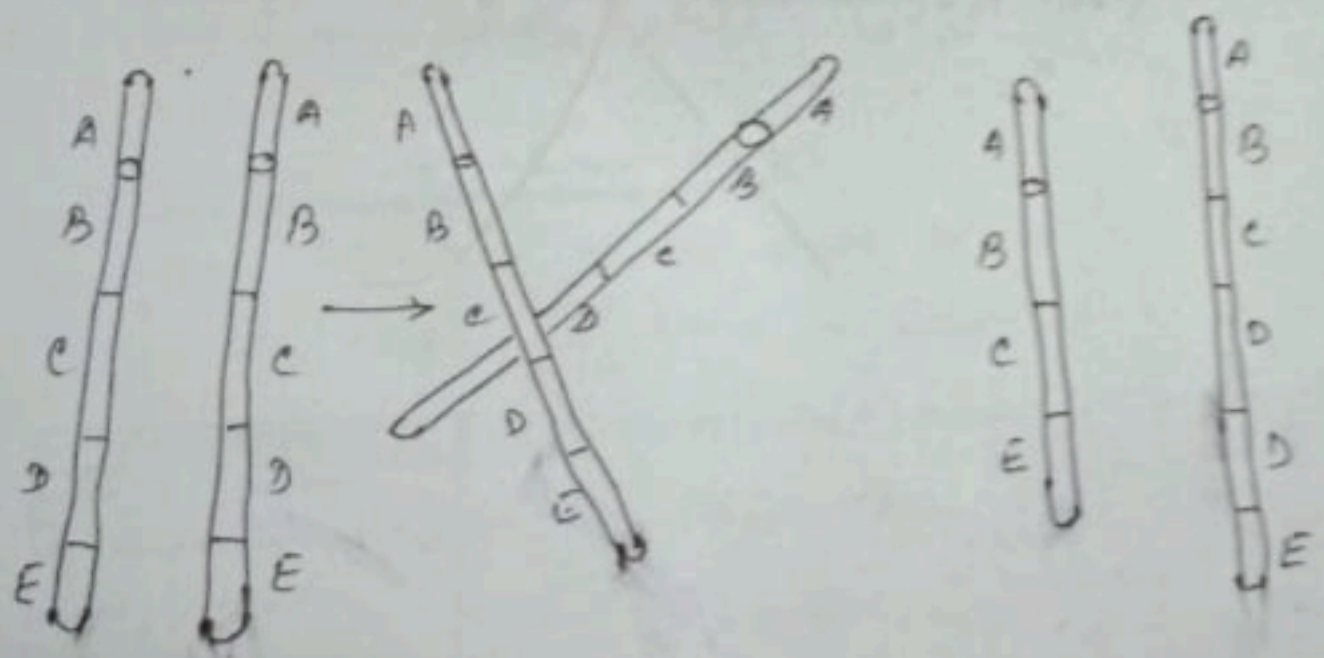


Fig: Duplication